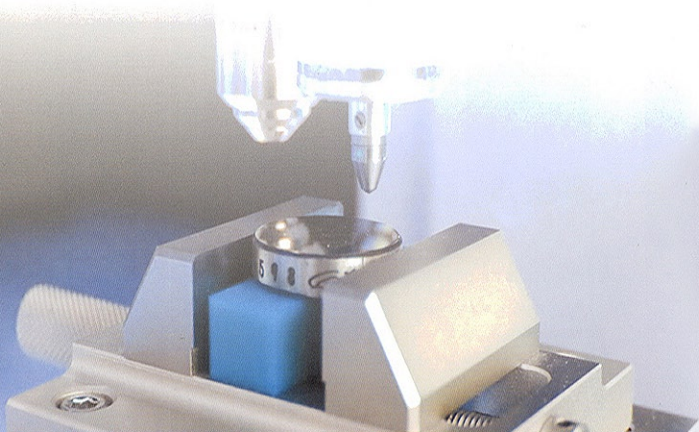


Auto-Reading Measuring Software  
for microHardness Testing

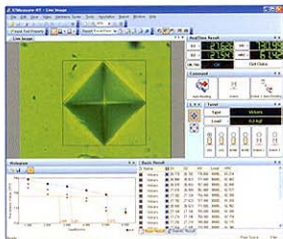
# XTMeasure-HT<sup>TM</sup>

eXTreme Measure makes you an expert



# Feature Highlights

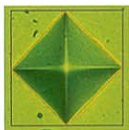
When you need a microhardness testing solution that produces reliable, accurate and repeatable test results, choose XTMeasure-HT™ software.



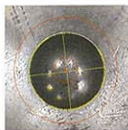
- User Interface -

## ■ Auto-Reading Measuring Tool

- Automatic measurement of hardness value by click once
- Supports Vickers, Knoop and Brinell
- Auto measure using the secondary regression analysis
- Supported only on Standard version



- Vickers Auto-Reading -



- Brinell Auto-Reading -

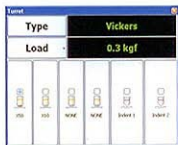
## ■ Input Tools for easy measuring

- Box-typed & Corner-typed Hand tool for Vickers & Knoop
- Vertical Guideline & Circle Profile for Brinell



## ■ Automatic Remote Control

- Full automatic remote control of hardness tester
- Control motorized turret for rotating, positioning, indenting, lighting
- Support various types of lens and hardness tester



- Turret Control -

## ■ Illumination Level Control

- Illumination Intensity changes with use of Sliding Switch



- Illumination Control -

## ■ Real-time Result

- Real-time display of measure result & hardness conversion value
- Offers various hardness conversion & custom conversion table
- OK/NG range: judgment at real time



- Real Time Result-

- Nominal Setup for OK/NG Judgement -

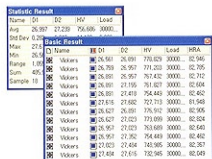


- New & Edit Convert Table-

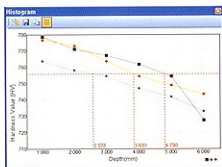
# Feature Highlights

## Result

- Basic result is easy to view
- Add or remove result column what you want
- Real-time statistic result view
- Hardness Value depth histogram View



- Basic and Statistic Result -



- Depth Histogram -

## Various and Useful Option

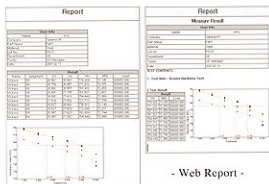
- Test Force display option select (kgf, gf, N, mN)
- Distance display option select (nm, um, mm, ...)
- User defined User Interface
- Multi-language support (English, Korean, Japanese, Chinese...)



- User Interface Setup -

## Report Generation

- Export data to Various type (MS Excel, Text, XML) for further statistical analysis.
- Images and histograms can be easily customized.
- Offers the document of various inspection results
- Flexible user-defined Report



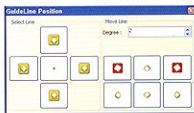
- Web Report -



- Report Property -

## Easy and Various Input Operation

- Mouse Handling
- Use Keyboard Hot-Key
- GuideLine Position Window



- GuideLine Position Window -

# Specification Highlights

## Hardness Test

- Vickers or Micro Vickers
- Knoop
- Brinell

## Live Measurement

- Interactive Measurements on Real-time Video mode
- Capturing Live Image and save to Image file

## Calibration

- Manual Calibration
- Key Input Calibration
- Reverse Calibration by using the Hardness Value

## Input Tool

- Vickers
  - Box Hand tool (Manual & Auto-Reading)
  - Corner Hand tool (Manual & Auto-Reading)
- Knoop
  - Vertical Guideline tool (Manual)
  - Corner Hand tool (Manual & Auto-Reading)
- Brinell
  - Vertical Guideline tool (Manual)
  - Circle Profile tool (Auto-Reading)

## Hardness Value Conversion

- Real-time Result (D1, D2, OK/NG, Hardness Value, Conversion Value)
- Conversion Value displayed at real-time
- Custom Conversion Table

## Load Unit

- kgf, gf, N, mN
- Various Load Unit

## Remote Device Control

- Load, Lens Manual Setup
- Device Setup Change Auto Sensing
- Turret Rotate Control
- Start Indent

## Annotation

- Line, Rectangle, Circle, Ellipse, Polygon, Polyline, Text-Box & Calibration Ruler

## Histogram

- Depth Hardness Histogram
- Histogram Display Setup
- Base Line and Multi Line

## Result Window

- Measurement data display
- Basic Result Window
- Statistic Result Window

## Report

- Export to Microsoft Excel, CSV
- XML Report (Web Style Form)
- Customized Report

## Utility Tools

- Zoom Window
- Layout Save / Recovery

## Hardness Device

- Mitutoyo (all model)
- Future Tech (FM Series)
- Matsuzawa (MMT Series)
- Brinell Common Device

## Acquisition

- Video Devices supporting WDM (Windows Device Model)
- Frame Grabber
  - XTVision
  - XTVision-U2
  - Meteor II (Digital, Multi-Channel, Camera Link)
  - PXC 200L
  - FlashBus MV Lite
  - VideoHome GrabBeeX
- Digital Camera
  - XTCam-DF1
  - XTCam-D140
  - XTCam-D200
  - DigiCAM (I, II)
  - Motic CAM
  - ARTCAM (130, 300)

## System Requirements

CPU	Minimum	: Pentium 3 / 700MHz
	Recommend	: Pentium 4 or higher
RAM	Minimum	: 256MB
	Recommend	: 512MB
HDD Space	Minimum	: 50MB
Graphic Card	Minimum	: 8MB High Color (16bit)
	Recommend	: over 32MB True Color (24bit or 32bit)
OS	Microsoft Windows 2000, XP, 2003	

**SARAMSOFT®**

SARAMSOFT CO.,LTD  
Tel: +82(country).31.388.0100  
Fax: +82(country).31.388.0301  
www.saramsoft.com  
support@saramsoft.com