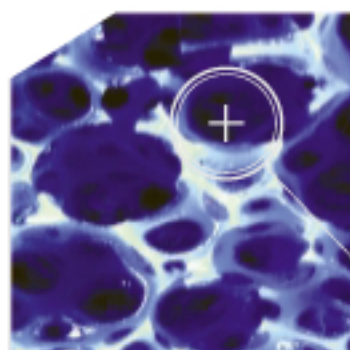
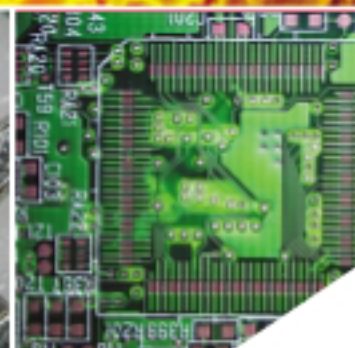
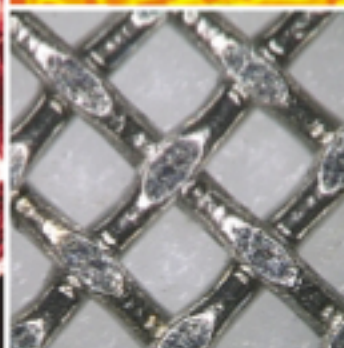
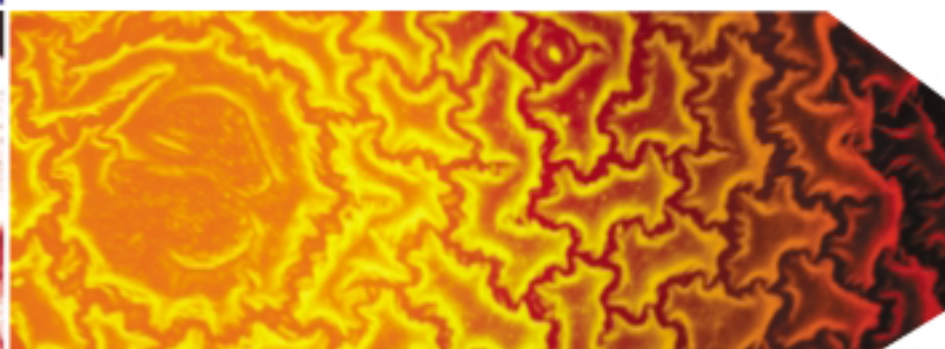
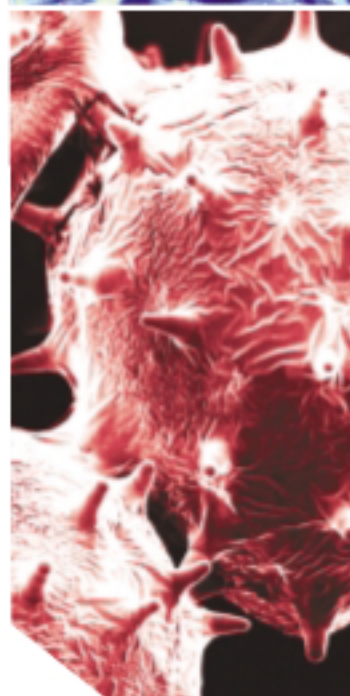


Image Measuring and Analysis Software
Advanced Solutions for Your Total Imaging Needs

IMP ImagePartner™

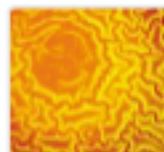


12.3652 Micro Meter 23.5635 Micro Meter



www.imagepartnership.com

IMP
Image Partnership



ImagePartner™ advanced image analysis software, provides excellences in solutions for wide spectrum imaging needs from the Industrial Quality Control to Scientific Applications. ImagePartner™ includes extensive enhancement tools, measurement tools, and powerful solutions listed below for more advanced Image Processing and Analysis.

Auto Calibration

for creating more accurate and efficient calibration

Auto Counting

for fully automatic measurement and analysis system

Caliper

for deriving distance measurements with object edge-detection info

Live Measurement

for measurements on real-time video mode

Multi-Focus

for merging different focal-depth images into one multi-focused image

Image Tiling

for stitching multiple small images together into one large image.

3D Surface Plot

for processing and observing 3-D Features of Images

Height Measurement

for automatic and accurate depth and height measurement

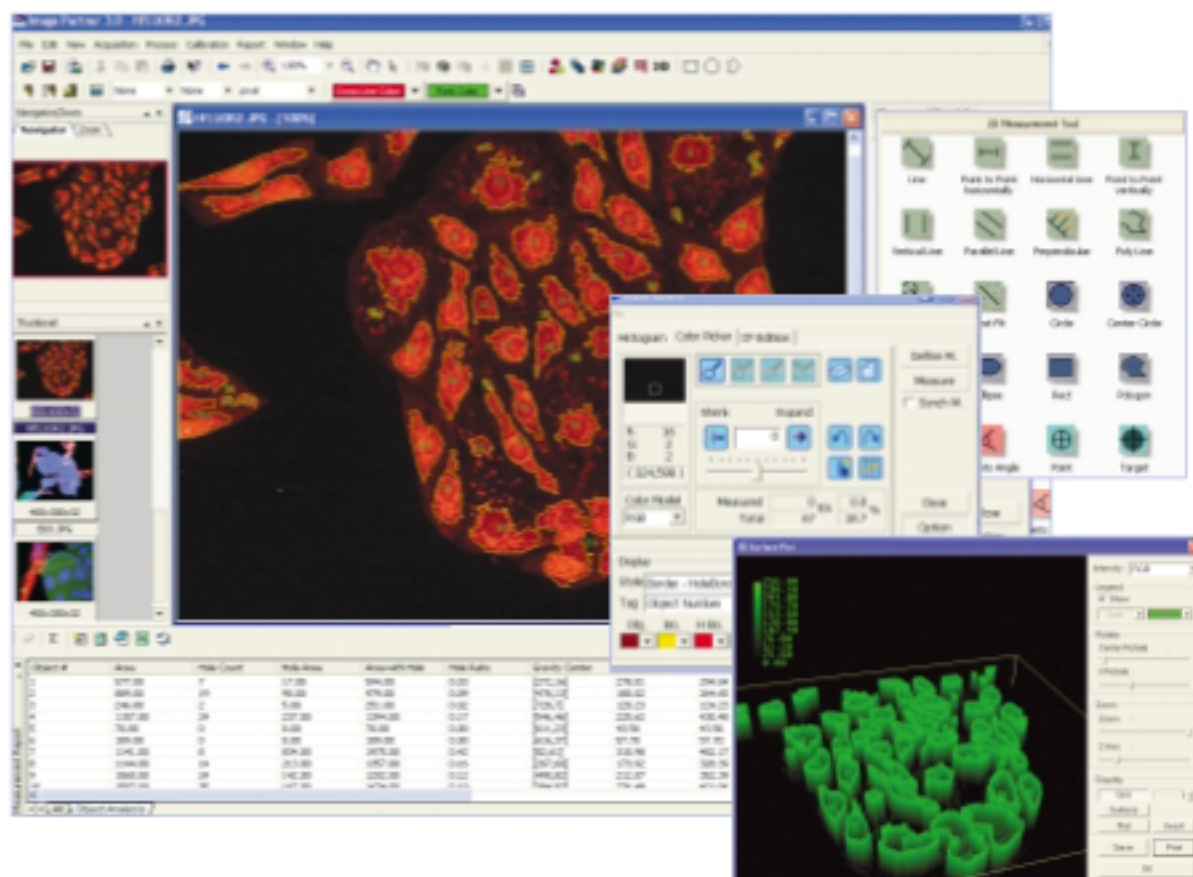
XTMeasure™

for measuring microscope imaging solutions

LiveInspector™

for comparing and analyzing multi image

ImagePartner™ will enable you to process various application-specific macros and plug-ins for more professional and ultimate Imaging Solutions. To learn more about the specifics, visit our website at www.imagepartnership.com.



Basic Functions

Measurement Tools

Allows accurate, diverse, fast, and free moveable measurement tools

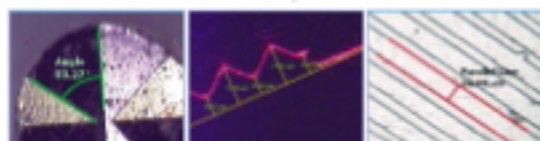
- Line / Diagrams tools to measure objects in the image
- 20 interactive Measuring tools : Length / Height / Width / Area / Angle / Location
- Property settings : Text type, color, size / Line type, color, weight / Color to Fill inside



- Center to Center -

- Vertical Length -

- 3 Points Circle -



- Angle -

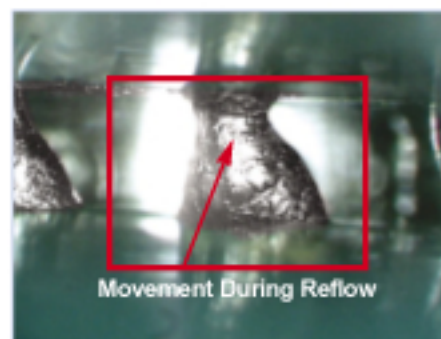
- Perpendicular -

- Parallel Line -

Annotation

Describes Image with various Text, Line, and Diagram tools

- Point / Line / Rectangle / Circle / Ellipse / Poly Line / Polygon / Text
- Property settings : Text type, color, size / Line type, color, weight / Color to Fill inside

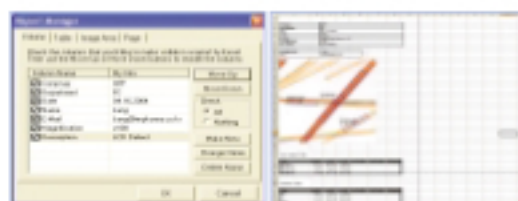


- An Image with Line and Text annotations -

Measurement Report

Allows generating and customizing measurement, and statistics data report

- Statistic Mode : statistic values of the measurement
- Backup sheet window : important data backup
- Send to Clipboard / Notepad : measurement data
- Report manager : Microsoft Excel™ based customize report
- Send E-mail : Image with or without flattened measurement data



- Report Manager -

- Excel Export -

Video Capture

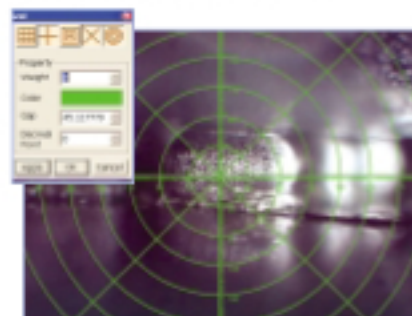
Captures image with CCD Camera, Image Capture Cards, Digital Camera, WDM, and Twain based devices

- RealTime Video Recording
- Multi Frame Capture
- Full Screen mode
- RealTime Vertical / Horizontal Flip
- Noise Removal

Grid

Provides or creates proper grids for intercept counting

- Plural overlay of different grids (up to 31 Grid types)
- Property Settings - Weight / Color / Gap unit / Decimal Point
- Printable on Real-time Video mode

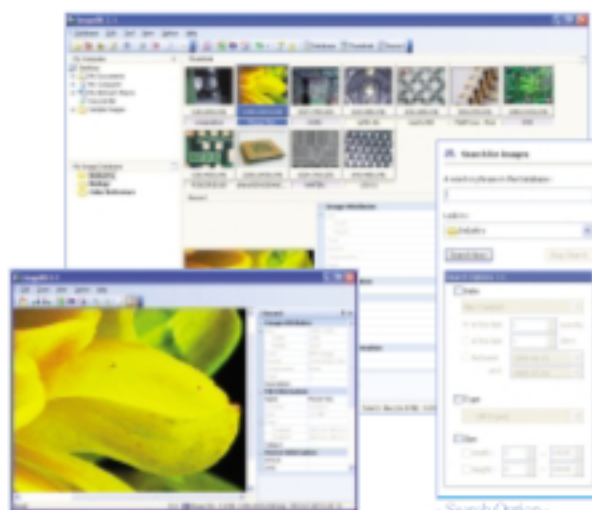


- Combination of plural Grids -

ImageDB™

Allows easy and efficient Image and Data Management

- Individual built-in module of Image Partner
- Easy and Efficient GUI
- Customize Record Fields and Category
- Import from Image Partner, external Applications, local disk
- Export to Image Partner, Excel, local disk
- Diverse Image Database search file options



- Main Graphic User Interface

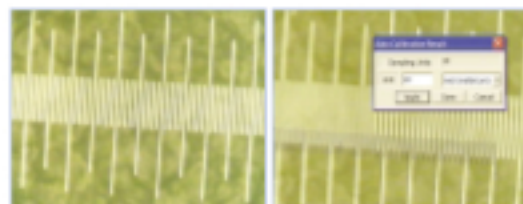
- Search Option -

Advanced Functions

Auto Calibration

Allows creating more accurate and efficient calibration

- Detect ruler automatically
- Efficient and Accurate Calibration
- Reliable Data results by powerful iterant precision
- Accurate Calibration in high magnifications (over x500)

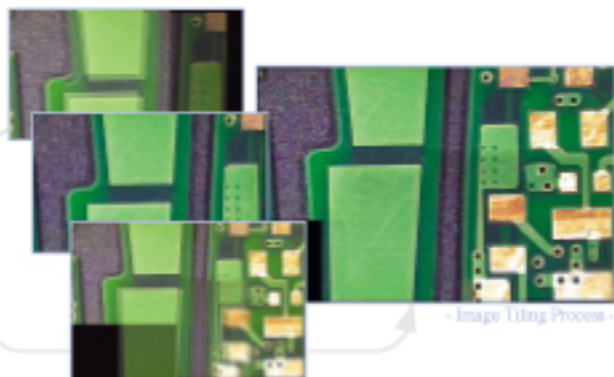


- An Image applied with Auto Calibration -

Image Tiling

Stitches multiple small location acquisitions together into one piece of large image

- Still Image / Real-time Video mode
- Manual Tiling / Auto Tiling
- Operate with automated stage on Real-time Video mode

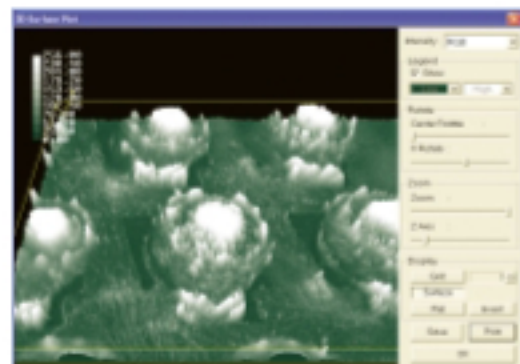


- Image Tiling Process -

3D Plot

Allows processing and observing 3 dimensional features of images by Luminance Intensity level

- Intensity - RGB planes based
- Legend - Intensity level / Color
- Rotate - Center / X axis
- Zoom - Whole size / Z axis
- Display - Grid / Surface / Flat / Invert

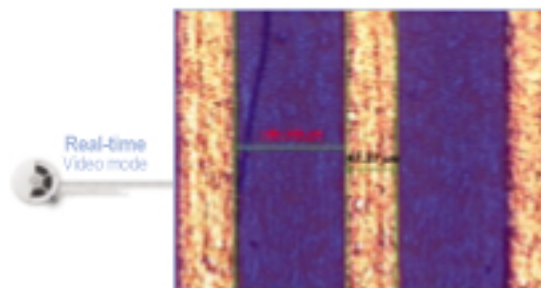


- 3D Surface Plot window -

Live Measurement

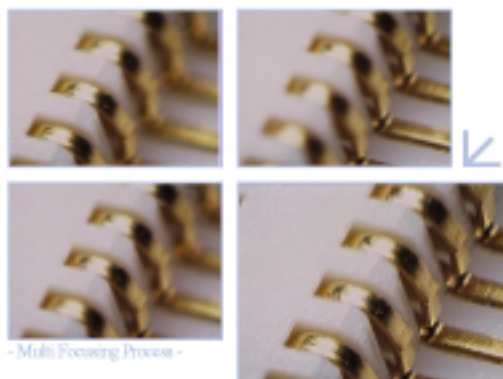
Allows you to measure in Real-time Video mode without image capturing

- Interactive measurement in Live Video mode
- Saved as measurement results burned on the image



Multi-focus

Combines images with different focal-depth into one piece of clear multi-focused image

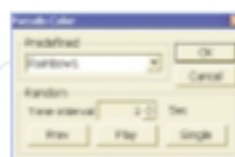


- Multi Focusing Process -

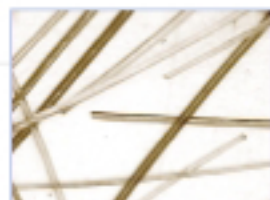
Pseudo Color

Allows easy observing and processing by clearly visualizing the boundaries of objects

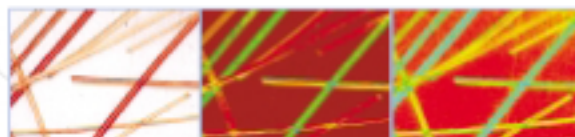
- Gray Color to Rainbow / Solaris / Thermal / Red to Blue / Blue to Red Color
- Random Time Interval Setting
- Color Selection through Random display



- Pseudo Color (Option window) -



- Original Image -



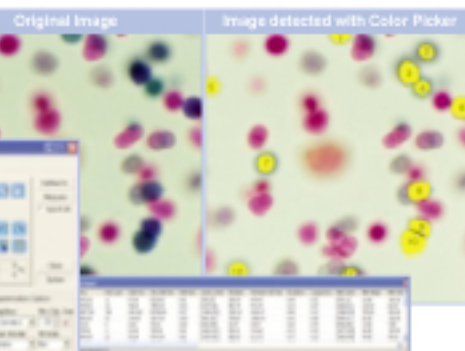
- Images applied with Pseudo Color -

Plug-in Modules

Auto Count

Provide automatic measurement and analysis of objects in the image

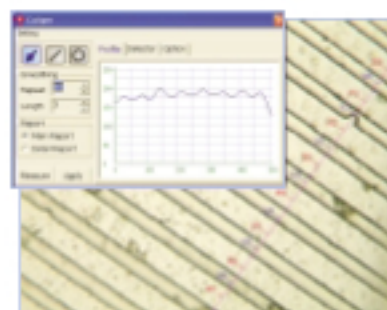
- Various Auto Object Detection methods : Color Picker / Histogram based Segmentation
- Object Editing : Auto Split / Manual Editing
- Auto Analysis for more than 30 geometrical figures and statistical data : Object Amount / Distribution / Size / Circular
- Microsoft Excel based customize report



Caliper

Derives accurate distance measurements with the object edge - detection information

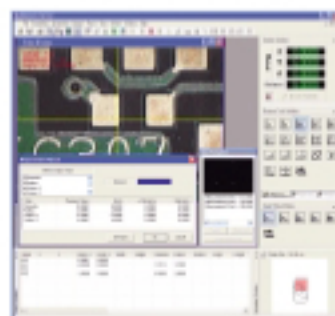
- Auto object edge detection
- Peak / Valley / Step up / Step Down / Threshold
- Luminance Profile
- Auto interval measuring of the edge



XTMeasure™

Provides imaging solutions specially designed for Measuring Microscope

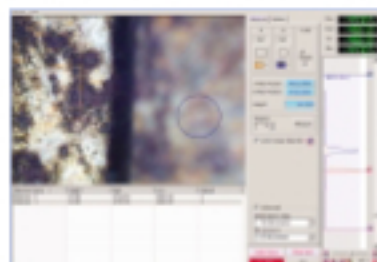
- Various Standard Measurement Tools (over 30 tools)
- Macro function for iterative works
- Stage Navigator : operate with automated stage
- Real-time Error Estimation of measurement results
- RS-232C communications support
- Microsoft Excel based Report Manager



Height Measurement

Allows measuring height differences between two areas with focal depth information

- Auto height measurement between two areas
- Auto Focus support at the AOI (Area of Interest)
- Manual height measurement between base level and AOI



Live Inspector™

Provides powerful Real-time Image Comparison solutions with multi-view

- Live Image / Capture / Image Database / Explorer mode
- Still image capture, Live image recording
- Systematical image data management with ImageDB™
- Comfortable image review with Multi Monitor support



Specification

Video Capture

- Live Video Recording
- Multi Frame Capture
- Full Screen mode
- Vertical / Horizontal Flip
- Image size controllable during Capture
- Noise Removal

Image File format

- Image File Formats :
BMP, JPEG, PNG, TIFF, JIF, and MPF
- Other File Formats :
Microsoft Excel™ (*xls, *csv), Text file (*txt)
- 8, 10, 12 bit Gray, 24, 32, 48 bit Color Image

Graphic User Interface

- User convenient environment with Component Window System
- Measurement Tool, Annotation Tool, Navigator / Zoom windows, Thumbnail window, Measurement Report window
- Zoom Dialog box for precise measuring with simple one-touch wheel scroll
- Navigation window for Area of Interest

Basic Processing

- Filters
 - Enhancement : Hpass 3x3, Hpass 5x5, Gaussian 5x5, Median, Sharpen, Min, Max
 - Edge : Roberts, Sobel, Prewitt, Laplacian 3x3, Laplacian 5x5
 - Morphological/Erode, Dilate, Open, Close
 - User defined filter
- Color : RGB to Gray / Gray to RGB / RGB to HIS / HIS to RGB
- Image Enhance : Invert / Auto Contrast / Auto level / Histogram Equalizer / Remove Noise / Brightness & Contrast Control / Threshold
- Geometric Transform : Resize, Rotate, Vertical/Horizontal/Both Flip
- Split / Merge Planes : RGB / HIS planes

ImageDB™

- Individual built-in module of Image Partner
- Easy and Efficient GUI / Record Modifying
- Full Screen mode of each fixed windows
- Import : ImagePartner™, External applications, Local disk
- Export : ImagePartner™, Microsoft Excel™, Local disk
- Database Image search function

Grid

- Supports 5 types of Grids
- Plural use of different grids possible (Max 31 type of Grid)
- Property Settings
 - Weight / Color / Gap unit / Decimal Point

Image Tiling

- One large image in high resolution
- Tiling small captured areas in one large Image
- Still Image/Live Video mode, Manual / Auto Tiling

Multi-Focus

- Provides one Clear-focused Image
- Combines different focal-depth Images into one clear multi-focused Image

Pseudo Color

- Clearly boundaries of object in the Image
- Gray Color to Rainbow / Solaris / Thermal / Red to Blue / Blue to Red Color
- Random Time Interval Setting
- Color Selection through Random display

Auto Calibration

- Efficient and Accurate Calibration
- Providing reliable Data results by powerful Iterant precision
- Accurate Calibration in high magnifications (over x500)

Interactive Measurement

- 20 Interactive Measuring tools
 - Length : Line, Parallel line, Perpendicular, Poly Line, Center to Center
 - Height : Point to Point Horizontally, Horizon Line
 - Width : Point to Point Vertically, Vertical Line
 - Area : Best fit, Circle, Center Circle, 3 points Circle, Ellipse, Rectangle, Polygon
 - Angle : 2 Line Angle, 3 point Angle
 - Location : Point, Target
- Property settings
 - Text type, color, size / Line type, color, weight / Color to Fill inside

Live Measurement

- Interactive measurements on real-time Video mode
- Capturing Live Image with measurement results possible

3D Surface Plot

- 3-Dimensional feature of Image
- Luminance Intensity level
 - Intensity - RGB planes based
 - Legend - Intensity level / Color
 - Rotate - Center / X axis
 - Zoom - Whole size / Z axis
 - Display - Grid / Surface / Flat / Invert

Report

- Statistic Mode
 - statistic values of the measurement
- Backup sheet window for important data
- Send to Clipboard / Notepad
 - Measurement data
- Report manager
 - Sends Report Data and Image to Microsoft Excel
- Send E-mail
 - Image with or without flattened measurement data

Plug-in Modules

Designed easy to add new Plug-in Modules

- Auto Count
- Caliper
- Height Measurement
- XTMeasure™
- Live Inspector™

Other Functions

- Provides Sensitive online self-guide Help menu

Image Acquisition Devices

- All TWAIN / WDM Supporting Devices
- Image Partnership Co., Ltd.
Vision Partner Pro
DigICAM
- Data Translations
DT313X
DT315X
- Integral
FlashBus MV Lite
FlashBus MV Pro
FlashBus Spectrim
FlashPoint
- Matrox
Meteor II
Meteor II Digital
- Euresys : PICOLO
- CyberOptics : PXC200

OEM & Customize Product Developments are available by quantity base.

System Requirements

CPU	Minimum : Pentium III / 700Mhz Recommend : Pentium 4 or higher
RAM	Minimum : 128MB Recommend : 256 MB (Window 98 SE) / 512 MB (Window NT / 2000 / XP)
HDD Space	Minimum : 80 MB
Graphic Card	Minimum : 8 MB High Color (16 bit) Recommend : over 32 MB True Color (24bit or 32 bit)
OS	Windows NT / 2000, Windows XP

IMP
ImagePartner™

#1617 Hansol Central Park Bldg. 1048-3 Beomgre-dong,
Dongan-gu, Anyang-si Gyeonggi-do S. Korea
(Postal Code: 431-778)
Phone: +82-31-388-0100 Fax: +82-31-388-0301
URL: www.imagepartnership.com
Technical Support: support@imagepartnership.com
Customer Support: sales@imagepartnership.com

IMAGE PARTNERSHIP CO., LTD.