

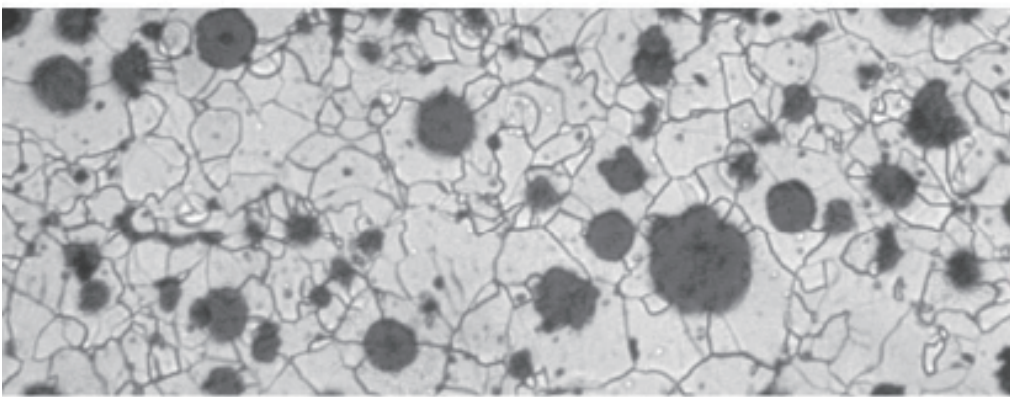
Metallurgical Microscopes

High resolution and excellent image and reliable mechanical structure;

Easy to operate and complete optional accessories, it is mainly applied in testing semi-conductor process, materials and mineral researching, precision engineering etc.



IE Series



Characteristics

- 광학 시스템 : 금속 전용 대물렌즈 와 PL10x렌즈를 사용하여 고해상도와 높은 분해능을 관찰 할 수 있다.
- 포커싱 시스템 : 1회전 38mm 조정 범위와 0.002mm 미세 포커싱 조절 가능
Mechanical stage : 사이즈 180mm x 155mm / 이동범위 75x40mm
- 조명시스템 : 컬러 조명법 사용, 개구 조리개 및 필드 조리개 장착
voltage 90-240V, 6V3W 반영구적 LED 조명 사용
- 비디오 이미징 장치 악세서리 : 이미징 장치 장착 가능한 카메라 포트 지원, 이미지 아날라이저 프로그램을 이용한 캡처, 측정, 분석 가능

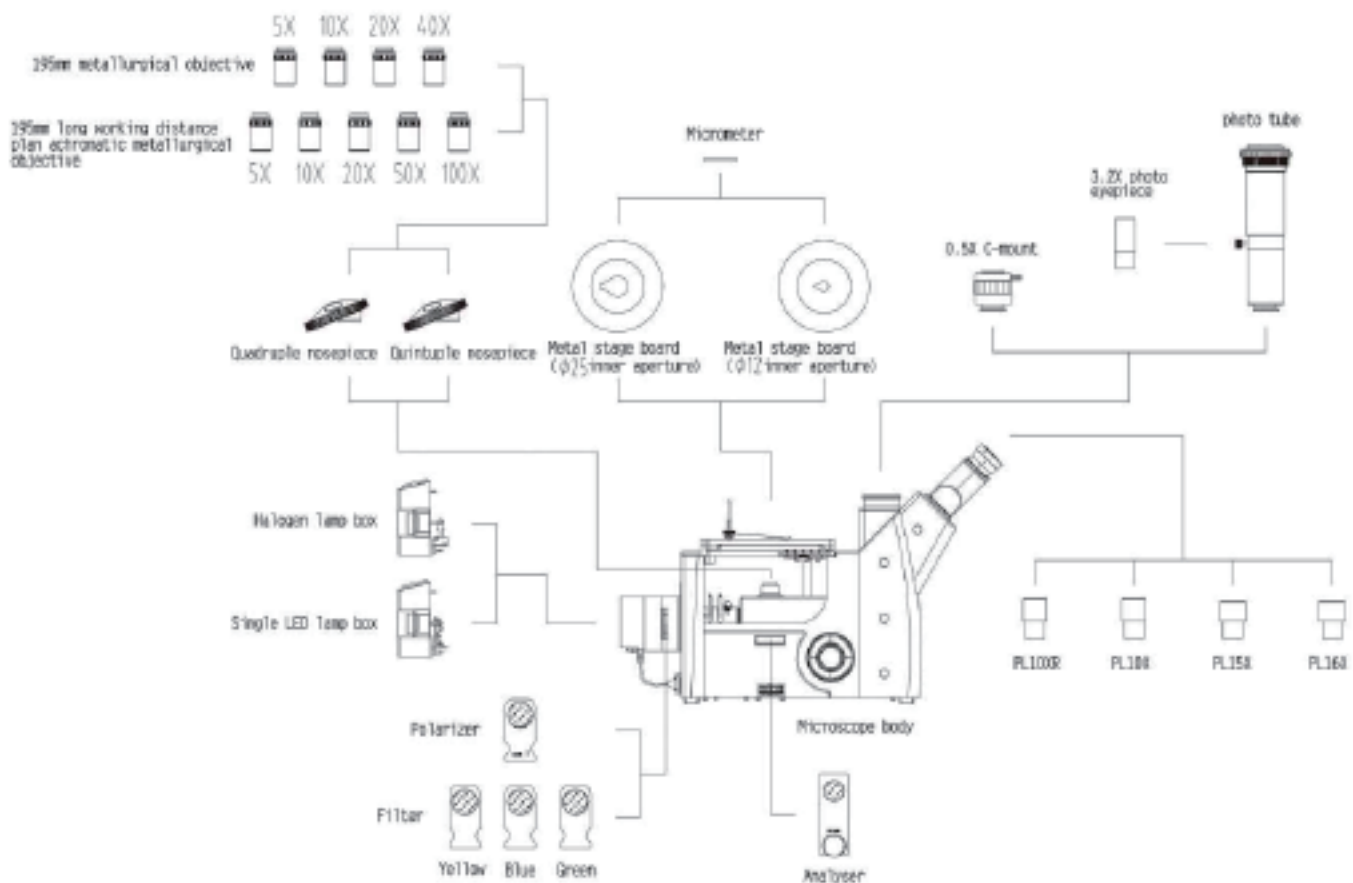
Objective parameter table

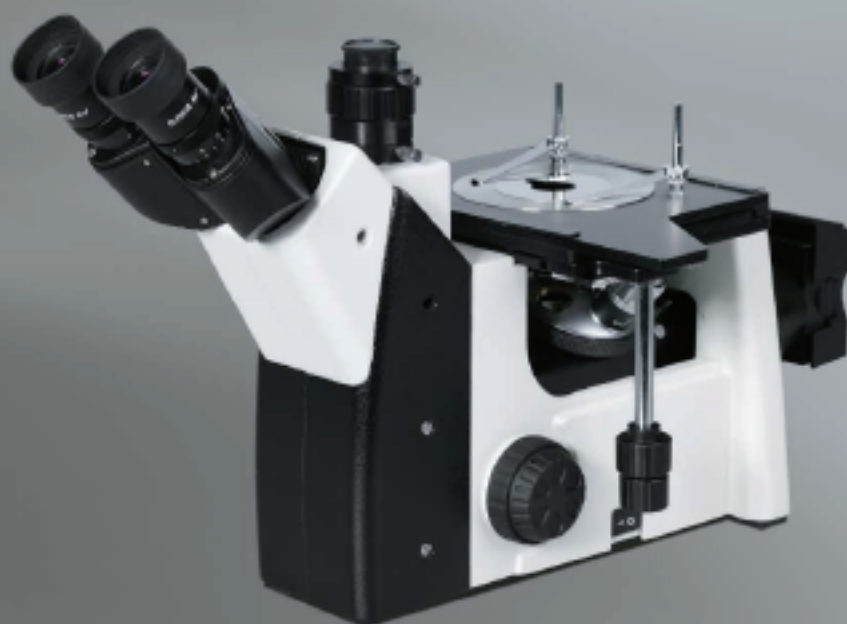
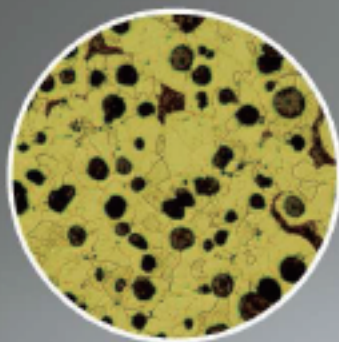
| Item | Magnification | N.A. | Working distance (mm) | Coverslip thickness(mm) | Conjugate distance (mm) |
|---|---------------|------|-----------------------|-------------------------|-------------------------|
| Long working distance plan achromatic metallurgical objective | 5X | 0.13 | 15.5 | 0 | 195 |
| | 10X | 0.25 | 8.7 | 0 | 195 |
| | 20X | 0.40 | 8.8 | 0 | 195 |
| | 50X | 0.60 | 5.1 | 0 | 195 |
| | 100X | 0.80 | 2.0 | 0 | 195 |

Eyeiece parameter table

| EYEPIECE | PL10X/18 | PL10X/18R | WF15X/13 | WF15X/13R | WF20X/10 | WF20X/10R |
|---------------|----------|-----------|----------|-----------|----------|-----------|
| Field of view | 18mm | 18mm | 13mm | 13mm | 10mm | 10mm |

IE Series Inverted Metallurgical Microscopes Configuration Chart





IE200M

IE Series Inverted Metallurgical Microscope Technology Specification

| | |
|---------------------------|--|
| Optical system | Color corrected finity optical system |
| Viewing head | Gemal trinocular head, 45° inclined, with adjustmnet diopter, inter-pupillary range:54mm to 75mm, Light split rate: 80%/20% |
| Eyepiece | High eye point plan eyepiece PL10X/18mm |
| Nosepiece | Quadruple nosepiece; Optional: quintuple nosepiece |
| Objective | Long working distance plan achromatic metallurgical objective 5X, 10X, 20X, 50X, 100X |
| Stage: | Mechanical stage, Size:180mmX155mm, Low position control by right hand, moving range: 75mmX40mm, precision:0.1mm |
| Focus | Low position coaxial focus system,coarse:38mm per rotation, fine precision 0.002mm |
| Illuminator | Transmission Koehler illumination with alterable aperture diaphragm and centerable field diaphragm , wide-range voltage 90-240V , 6V/30W halogen bulb, with continuous intensity |
| Polarizer device | 360° rotary analyser , the polarizer and analyser both can shift out the optical way |
| Video & photo accessories | C-mount adapter (1/2, 1/3) and Relay mirror |



- 3안 경통 시스템 장착, CCD카메라, C-Mount 아답타, 이미지 아날라이저 프로그램을 사용하여 이미지 측정, 분석, 기록 등 가능



IP_Materials™ 금속조직 구상화, 비금속개재물, 오토 카운트, GrainSize 측정



금속, 생물 및 실체 현미경을 위한 제품으로 다양한 포맷의 이미지 파일과 영상 획득장치를 지원하며, 수동측정 및 개체 자동 분석을 지원합니다. 다양한 분석 차트와 3차원 뷰 및 멀티포커스, 이미지타일링 등의 강력한 기능을 손쉽게 이용할 수 있습니다.

[권장사양]

- 운영체제(OS) : Windows 7 이상
- CPU : 2GHz 이상의 32Bit 또는 64Bit 프로세서, 듀얼코어 이상 권장
- 메모리(RAM) : 32Bit는 최소 2GB 이상, 권장 3GB 이상
64Bit는 4GB 이상 권장
- 하드디스크 : 32Bit는 16GB 이상, 64Bit는 20GB 이상(설치할 하드디스크의 최소 용량)
/ 저장하는 데이터의 양에 따라 달라집니다.
- 필요 프로그램(보고서) : 엑셀97 이상, PDF 뷰어

[제품 설명 상세보기]

http://www.saramsoft.com/srProductIP_Materials

IE Series Inverted Metallurgical Microscopes Specification

| Specification | | Mode |
|-----------------------|--|--------|
| Part | Description | IE200M |
| Eyepiece | PL10X/18 | ●● |
| | PL10X/18R with reticle | ○ |
| | WF15X/13 | ○○ |
| | WF15X/13R with reticle | ○ |
| | WF20X/10 | ○○ |
| | WF20X/10R with reticle | ○ |
| Head | Gemel trinocular head, 45°inclined, with adjustmnet diopter, inter-pupillary range:54mm to 75mm, Light split rate: 80%/20% | ● |
| Objectives | Long working distance plan achromatic metallurgical objective 5X | ● |
| | Long working distance plan achromatic metallurgical objective 10X | ● |
| | Long working distance plan achromatic metallurgical objective 20X | ● |
| | Long working distance plan achromatic metallurgical objective 50X | ● |
| | Long working distance plan achromatic metallurgical objective 100X | ● |
| Nosepiece | Quadruple nosepiece | ● |
| | Quintuple nosepiece | ○ |
| Body | Low position coaxial focus system,coarse:38mm per rotation, fine precision 0.002mm | ● |
| Stage | Mechanical stage, Size:180mmX155mm, Low position control by right hand, moving range: 75mmX40mm, precision:0.1mm | ● |
| | Metal Stage Plate (Dia.12) | ● |
| | Metal Stage Plate (Dia.25) | ○ |
| Illuminator | Reflected Koehler illumination with alterable aperture diaphragm and centerable field diaphragm , wide-range voltage 90-240V , Single 3W LED bulb, with continuous intensity | ○ |
| | Reflected Koehler illumination with alterable aperture diaphragm and centerable field diaphragm , wide-range voltage 90-240V , 6V30W halogen bulb, with continuous intensity | ● |
| Filter | Blue filter | ● |
| | Green Filter | ● |
| | Yellow Filter | ○ |
| Polarizer accessories | 360° rotary analyser , the polarizer and polarizer both can shift out the optical way | ● |
| Vedio & Photo Device | Photo tube(with PK mount), 0.5XC-mount adapter, C-mount and relay mirror | ○ |

SARAMSOFT

| 주 | 사람소프트

www.saramsoft.com

Tel : 031-388-0100

Fax : 031-388-0301

E-Mail : support@saramsoft.com